



Midvale Irrigation District

P.O. Box 128 Pavillion, Wyoming 82523
307-856-6359 midvale@wyoming.com www.midvaleirrigation.net

April 2, 2020

WATER FORECAST & FLUSHING SCHEDULE

The Midvale Board of Commissioners has tentatively scheduled flushing to begin around mid-April. Currently we are burning ditches, doing a few repairs and getting the system set up for flushing. The ditch riders will not be on a regular schedule, of course, until the system has been completely flushed. The date for delivery of irrigation water has tentatively been set for the first part of May. The beginning water allotment is 1.0 AF/Acre.

With flushing of Wyoming and Pilot Canal systems beginning mid-April, Midvale staff will prioritize their schedule depending on orders for water by irrigators. We request that you communicate your delivery needs with the office staff in advance. *Please remember that there is a 48 hour notice for water orders (on tickets) and 24 hour notice for an off ticket. Online requests need to be in by 9:00 a.m. **When submitting online tickets over the weekend, please be aware that we do not receive these until Monday morning!!***

CROP REPORT

If you farmed 40 acres or more of irrigable acres last year, you received a crop report census form from us last November. If you have not filled this out and returned it, you will not be eligible to receive water this year.

TIME TO OPEN GATES

A reminder to everyone; it is time to remove any fences, gates, panels, etc. on the Easements and open gates on lateral operation and maintenance roads. District policy requires that all roads remain open to Midvale personnel during the irrigation season (April 1st through October 15th) each year). We appreciate your cooperation on this matter.

Easements

Midvale Irrigation District's Rules, Policies and Procedures, Rule 8 (Use of Easements) is written to help explain the Federal and District guidelines for use of Easements to water users. District easements are not open for public use. More and more people are using Midvale's easements for private drives, hunting and joy riding. You may have seen new signs posted along the District easements. Midvale's easement is typically 50 feet on each side of the facility from the top inside of the canal or lateral. Any private improvement built within 50 feet is subject to authorization through requesting and approval of a permit from Midvale. Please review the above-mentioned rule and if you have any questions, please do not hesitate to contact the District Office. (More information below under Permits Required).

TICKET AUTHORIZATION FORMS

Water order ticket authorization forms are available at Midvale's office or online at our website (midvaleirrigation.net). All persons authorized to order water for your property must be listed on this form before ordering water. If nothing has changed, there is no need to file a new form each year.

PERMITS REQUIRED

All of Midvale's system (canals, laterals, open drains, and underground drains) are located on Federal easements. Anyone wishing to do any work on these easements must have approval & permission to do so in the form of a formal request and permit issued by the District. Examples of work requiring permits include bridges, pumps, crossing pipes, buildings, fences and water gaps. Please consult Midvale's Policy Handbook or call the District office (307-856-6359).

"CERT" FORMS

In accordance with the 1982 Reclamation Reform Act, any person and/or entity who owns and/or leases 240 or more irrigable acres is required to complete a "Certification of Landholding" form each water year **prior** to being eligible

to receive irrigation water through canals managed by Midvale Irrigation District. If a person and/or entity owns and/or leases irrigated acreage in another federal irrigation system, the required certification must include that acreage. The District will mail the necessary certification forms to you for your use in complying with this law. This form must be signed and received in the District office by May 1st, if you are planning to transfer any of your water allotment between lands leased and/or controlled by you. Midvale will be contacting you if you have any deeded lands in a trust, per requirements of the Bureau of Reclamation.

WATER ALLOTMENT TRANSFER

You may transfer all or part of a water allotment between farms within your farming operation as listed on either a *Certification Form* (for operations totaling 240 irrigable acres or more) or a *Farming Operation Summary* (for operations totaling less than 240 irrigable acres). The applicable form must be received in the District office by May 1 in order for you to be eligible for transfers. The *Release and Consent to Transfer Allotment* and *Farm Operation Summary Forms* are available on the District's website under the "Publication" tab (then go to "Forms" and select the appropriate form). If you do not have access to the internet please call the office and all necessary forms will be mailed to you. **Please note:** *It is not necessary to complete the Farm Operation Summary if you farm less than 240 irrigable acres and are not leasing irrigated ground to or from someone else.*

WATER DELIVERY ISSUES

The Midvale Board of Commissioners, by resolution, has established a maximum rate of water delivery at 2 c.f.s. per 70 acres served by each turnout; this rate of flow was used by Bureau of Reclamation engineers to design the delivery system. We can deliver water to individual turnouts at that rate; however, due to physical limitations in the size of canals and laterals we cannot deliver water at maximum flows to all turnouts during periods of peak demand. If water demand exceeds the design capacity of a particular lateral, Midvale staff and management will begin to pro-rate delivery based on the percentage of acres being irrigated in relation to the total capacity of the lateral, each acre receiving an equal share of the total flow. Quite often landowners can work with their ditch rider to implement a rotation schedule among irrigators that will avoid a limitation in water delivery rates.

WASTE WATER

Under provisions of Wyoming state law and Midvale policy, it is the responsibility & duty of the water user to return waste water to a natural drain. You are responsible for your water until it reaches the appropriate location, as dictated by the Midvale Board of Commissioners. During the past season we were notified by the Fremont County Road and Bridge Department and the State Engineers office of numerous violations within the Midvale system. Flood irrigation is not the only culprit, we have center pivot sprinklers that are irrigating county roads; if you are applying water to unadjudicated lands it is likely we will be contacting you about resolving the problem. The basic precept of Wyoming water law: *"Beneficial use shall be the basis, measure and limit to the right to use water at all times."*

DISTRICT ELECTION

Jock Campbell is the representative on the Board of Commissioners for District #5. He was re-nominated to a three-year term in February at the Annual Meeting.

TRESSPASS ON BUREAU OF RECLAMATION LANDS

Please be aware the US Bureau of Reclamation (USBR) has begun investigating trespass of their lands by adjacent property owners. If you own or lease lands adjacent to USBR lands, please be aware of your property boundaries and keep away from trespassing by, 1) Not utilizing USBR lands for stack yards or storage of equipment, and, 2) Not irrigating/farming USBR lands without a water right or legal contract, or they will be contacting you. These areas include, but are not limited to, Ocean Lake, 5-Mile Creek, Muddy Creek and Boysen Take lands.

TRANSFER OF WATER RIGHTS

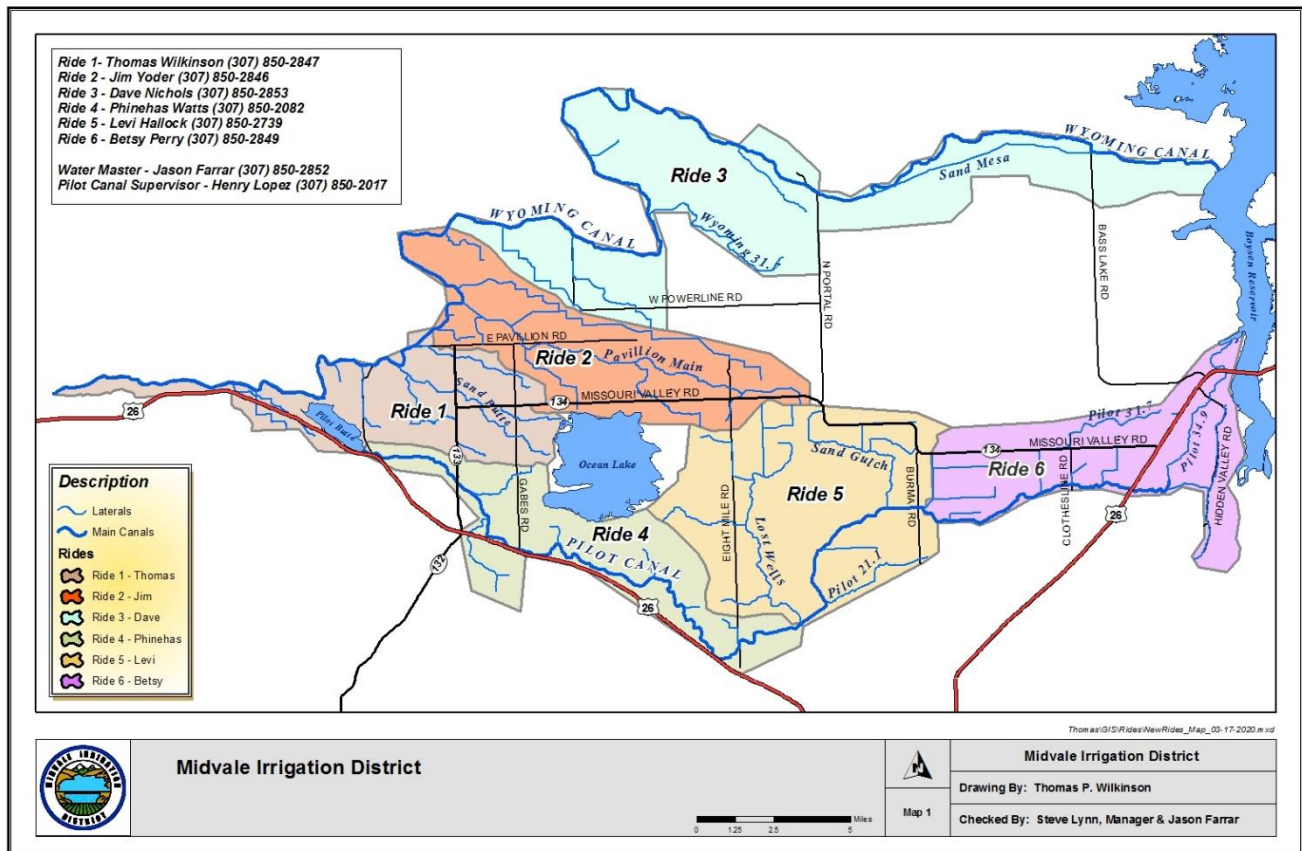
A reminder to land owners installing center pivot systems or changing systems around, you need to check with the Midvale office to make sure that your new system is not irrigating ground that is classified as Class 6 land. In February of 2008 the final adjudication of the 7300 Permit was complete, assigning water rights to specific lands. Class 6 land did not receive an adjudicated right because it was deemed incapable of producing an adequate crop to be economically viable. Legally, you cannot put 7300 Permit water on Class 6 land.

MIDVALE IRRIGATION CONTACT LIST

Manager – Steve Lynn - 307-850-5441
Construction/Maintenance Manager – Scot Weber – 307-709-2195
Office – Chris & Tanya – 307-856-6359
Office Manager – Pat Rorabaugh – 307-856-6359

New Ditchrider Boundaries

The areas covered by the ditchriders have been updated so each ditchrider has a more equitable day. Please see the map with names and phone numbers of ditchriders. If you have any questions as to who your ditchrider is, please contact the office. This map and information is also on our website.



Phone Numbers

We have noticed there are fewer and fewer phone numbers in the phone book. When we try to get in touch with you for a water reason, we find the number no longer exists. If you do not have a problem with us having your cell phone number, please contact us so we can enter you in our records. We DO NOT give out numbers to anyone other than the employee trying to reach you.

Coronavirus

Our office continues to remain open and we have taken steps to be more proactive in preventing the spread of this virus by extra cleaning and disinfecting common areas several times a day to protect everyone. At the same time, we expect the same in return - if you are not feeling well, please call us instead of coming in. We have discussed the possibility of shutting the office down and we hope and pray it doesn't come to that, but we will remain diligent in trying to prevent our employees from becoming sick. Let's continue to be careful and respectful of everyone's situations.